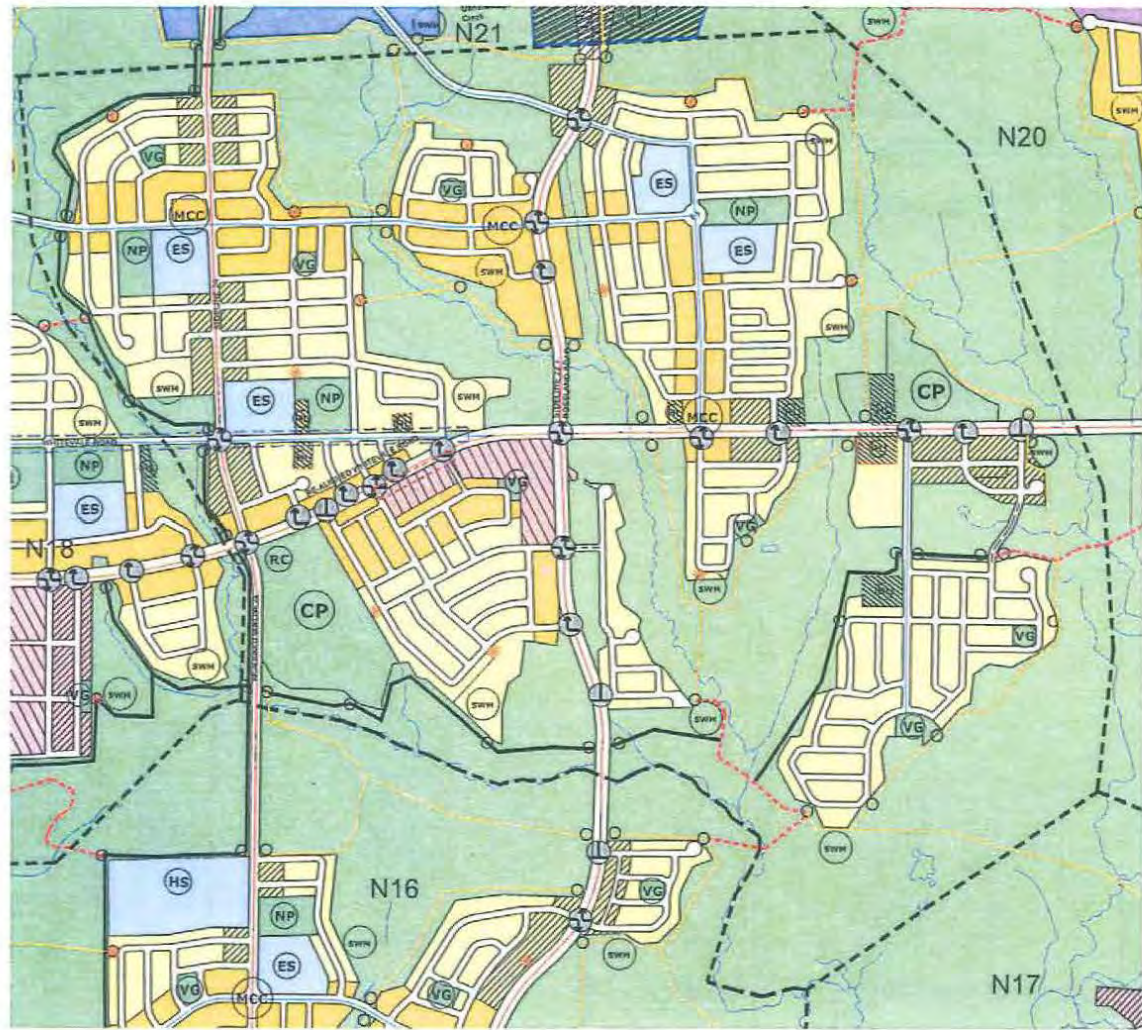


SCHEDULE XI to PICKERING OFFICIAL PLAN

**Neighbourhood 19:  
Wilson Meadows  
Neighbourhood Plan**

August, 2013

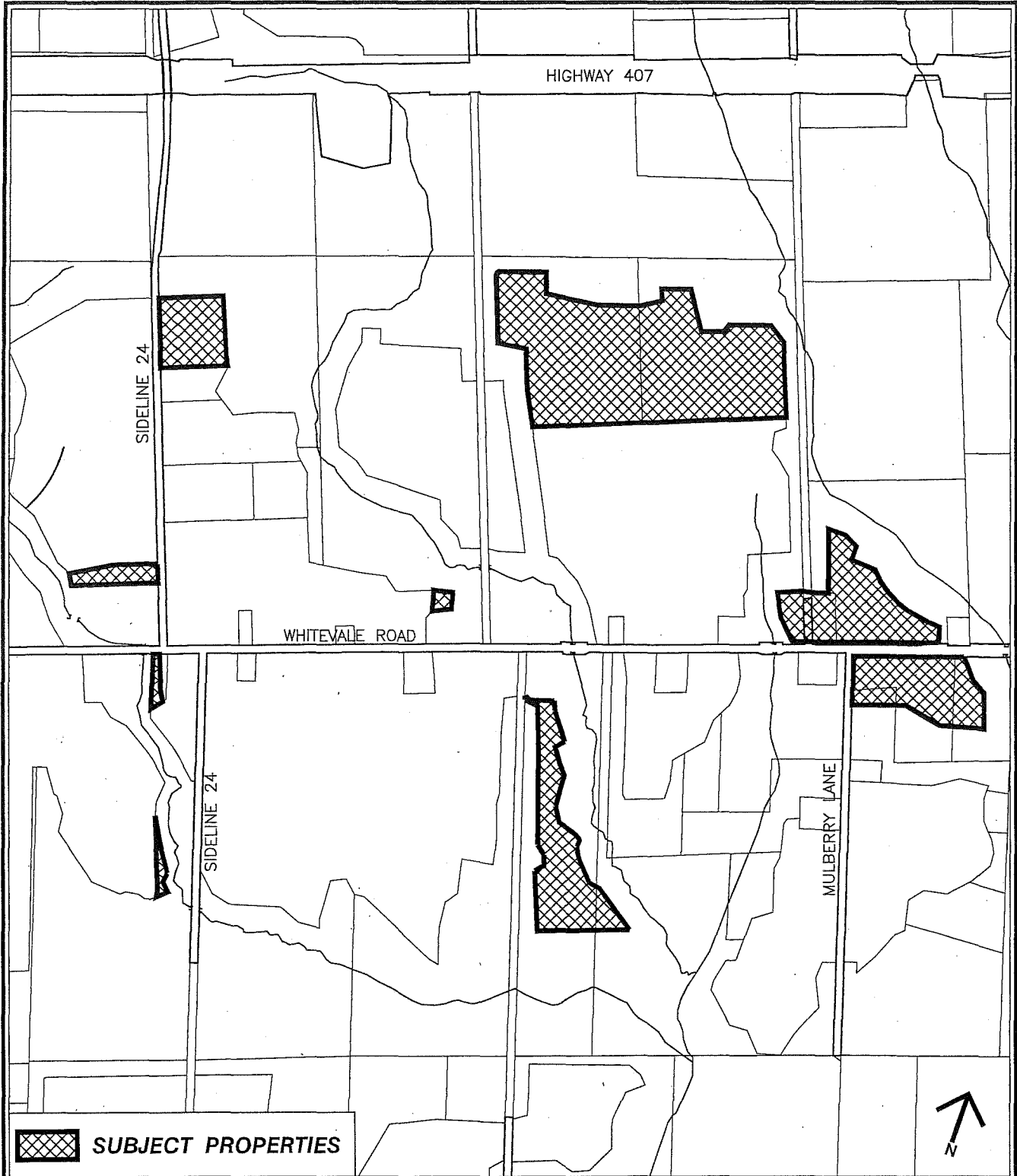


- Seaton Natural Heritage System
- SWM Facility (\* see note below)
- Trailheads
- Terminal Views
- CP Community Parks
- RC Recreation Centre
- NP Neighbourhood Parks
- VG Village Greens
- ES Elementary Schools
- HS High Schools
- MCC Minor Commercial Cluster
- Low Density Type 1 Areas
- Low Density Type 2 Areas
- Medium Density Areas
- Community Node
- Heritage Lots
- Pedestrian Predominant Street
- Character Road
- Primary Neighbourhood Connecting Trails
- Primary Recreational Trails
- Secondary Recreational Trails
- Primary Bikeway
- Secondary Bikeway
- Local Road in NHS see Section 12.21 (h)(ii)
- Neighbourhood Boundary
- Full Movement Intersection
- T Intersection
- Right In/Right Out Intersection

Note: The number, size and location of storm water management facilities shown on this schedule are conceptual only and are subject to approval as set out in Section 11.73 and section 12.21 (h) (iv) of this Plan.



Attachment # 13 to Information Report # 06-15



**SUBJECT PROPERTIES**



**Location Map**

**FILE No:** SP-2015-05 & A10/15

**APPLICANT:** Infrastructure Ontario

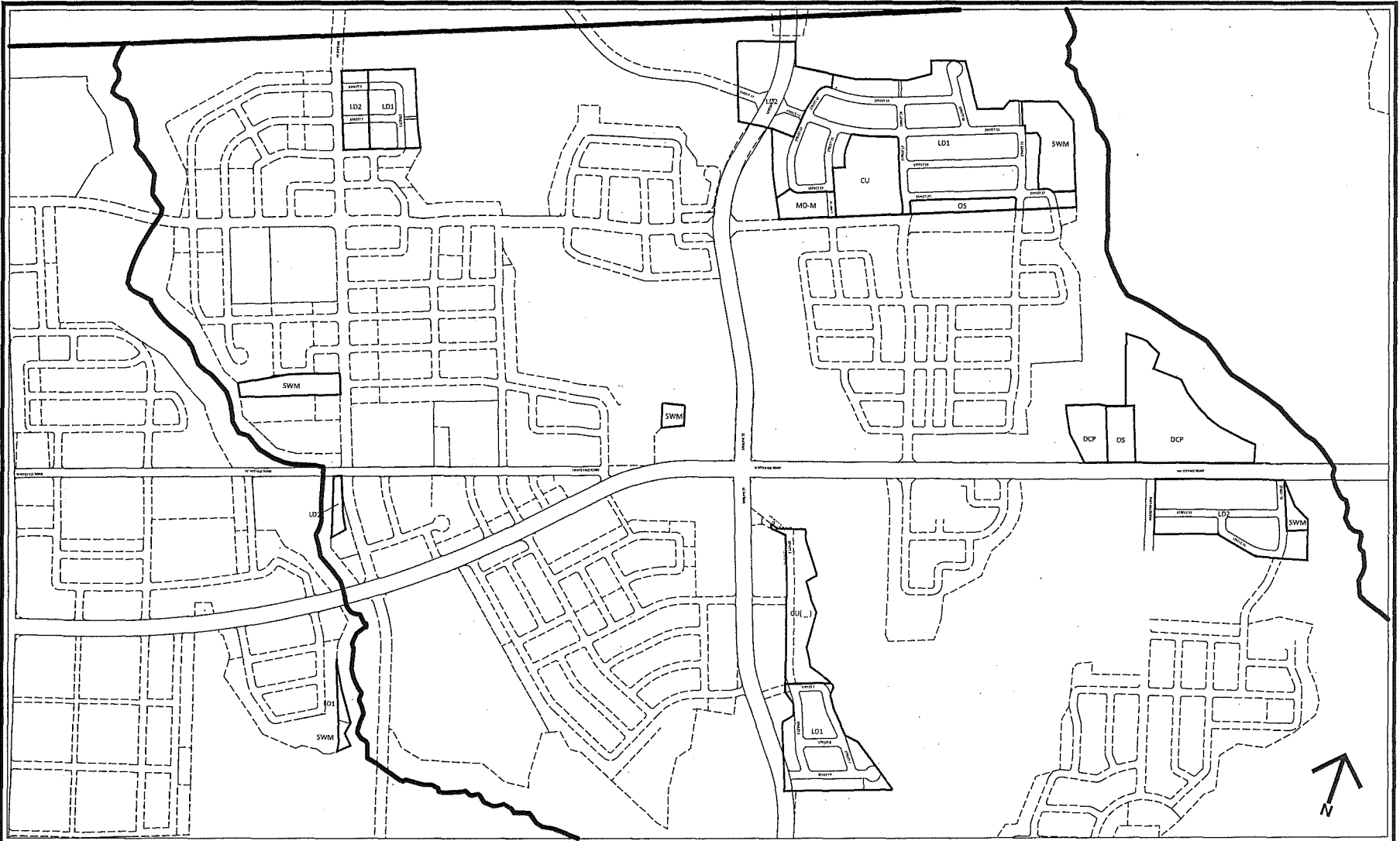
**PROPERTY DESCRIPTION:** Pt Lt.20-24 Con 4 & Pt Lt 20-25 Con 5

DATE: Aug 17, 2015

Data Sources:  
 © Teranet, Enterprises Inc. and its suppliers. All rights Reserved. Not a plan of survey.  
 © 2013 MPAC and its suppliers. All rights Reserved. Not a plan of Survey.

SCALE NTS

PN-19



<b>Submitted Plan</b>
<b>FILE No:</b> SP-2015-05 & A10/15
<b>APPLICANT:</b> Infrastructure Ontario
<b>PROPERTY DESCRIPTION:</b> Pt Lt.20-24 Con 4 & Pt Lt 20-25 Con 5
FULL SCALE COPIES OF THIS PLAN ARE AVAILABLE FOR VIEWING AT THE CITY OF PICKERING CITY DEVELOPMENT DEPARTMENT.
DATE: Aug. 17, 2015

**Draft Plan of Subdivision SP-2015-05 Proposed Development Detail  
 Neighbourhood 19**

<b>Pickering Official Plan Designation</b>		- Urban Residential Areas – Medium Density Areas
		- Urban Residential Areas – Low Density Areas
		- Open Space Systems – Active Recreational Areas that includes a District Park
<b>Neighbourhood Plan Designation</b>		- Medium Density Area
		- Low Density Area Type 2
		- Low Density Area Type 1
		- Community Park
		- Neighbourhood Park
		- Village Green
		- Elementary School
		- Heritage Lot
<b>Zoning</b>	Existing	- A – Agricultural, By-law 3037
	Proposed	- appropriate to permit proposed draft plan in Seaton Zoning by-law 7364/14
<b>Details of the Draft Plan</b>		
Total area of draft plan		- 41.3 hectares
Medium Density Area		- 0.6 hectares
Low Density Area Type 2		- 6.5 hectares
Low Density Area Type 1		- 11.6 hectares
Community Park		- 5.1 hectares
Neighbourhood Park		- 0.6 hectares
Elementary School		- 2.3 hectares
Heritage Lot		- 0.7 hectares
Stormwater Management facilities		- 3.3 hectares
Community Use Block – Transit facility		- 1.9 hectares
Municipal roads		- 8.2 hectares
<b>Residential Units</b>		
Detached Dwelling Units		- 317
Semi-Detached Dwelling Units		- 94
Townhouse Dwelling Units		- 139
<b>Total dwelling units</b>		- <b>550</b>